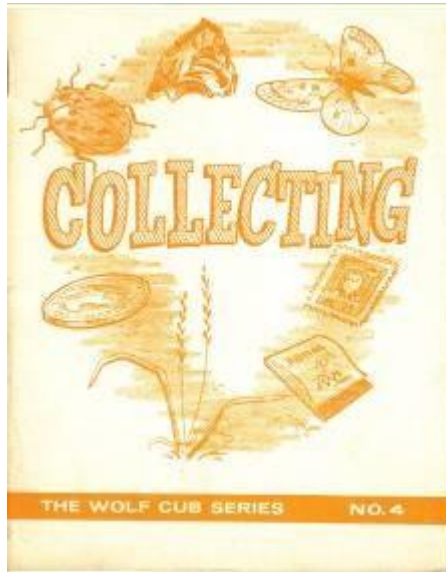


Collecting



The Wolf Cub Series No. 4

(1965)

Published by
The National Council
Boy Scouts of Canada
Ottawa Ontario

Collecting

Downloaded from:
“The Dump” at Scoutscan.com
<http://www.thedump.scoutscan.com/>



Editor's Note:

The reader is reminded that these texts have been written a long time ago. Consequently, they may use some terms or express sentiments which were current at the time, regardless of what we may think of them at the beginning of the 21st century. For reasons of historical accuracy they have been preserved in their original form.

If you find them offensive, we ask you to please delete this file from your system.

This and other traditional Scouting texts may be downloaded from The Dump.

CONTENTS

Stamps

Stones

Bottle Caps

Bugs and Insects

Butterflies & Moths

Leaves

Flowers

Coins

Grasses

Feathers

Pennants

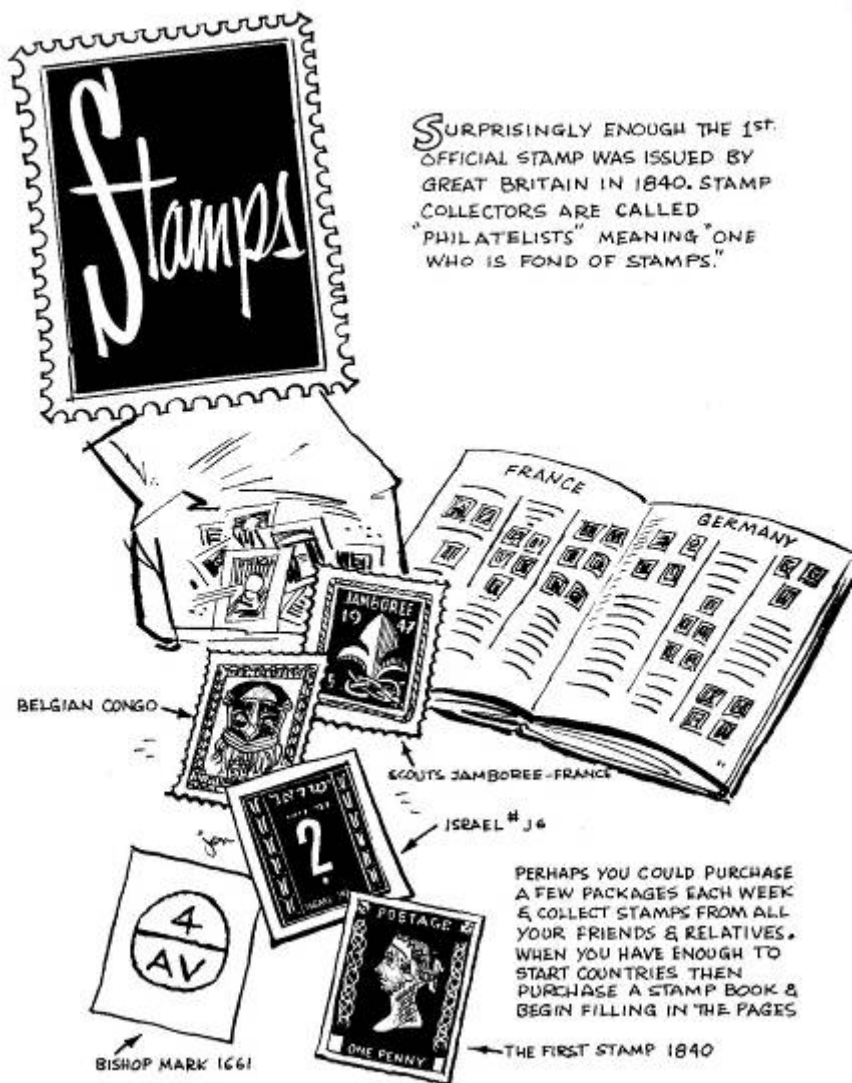
Woods

Match Folders

Shells

Photographs

Making a Museum



-The HISTORY of stamps

①



AN ANCIENT ASSYRIAN MARK
(KINGS WOULD USE THEIR STAMP
ON THEIR VARIOUS PROPERTY)
(BANNERS SADDLES ETC.)

②



THE KING'S SEAL

③



A WAX SEAL

④



PARCHMENT SEALED
WITH WAX STAMP

A FIRST DAY COVER

IF A STAMP IS CANCELLED ON THE
DAY OF ISSUE IT'S CALLED A FIRST DAY
COVER. SHOWN IS A TYPICAL ONE

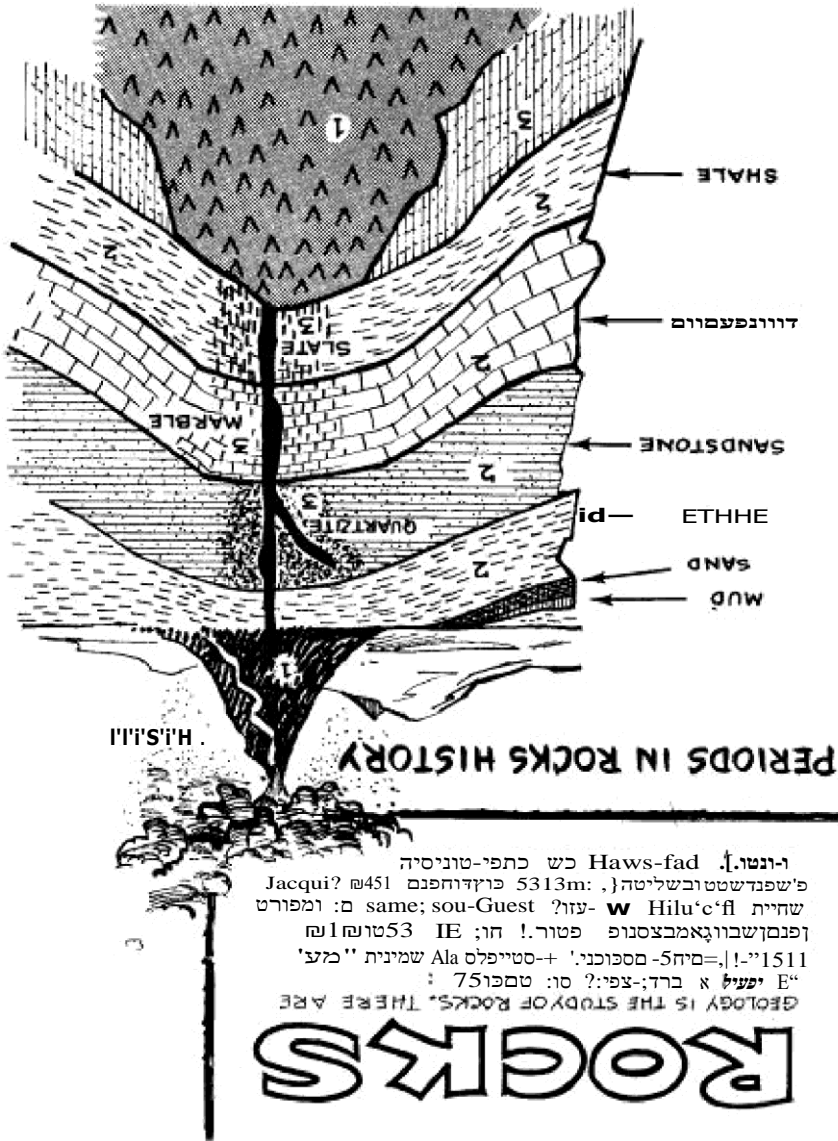
NEW STAMP



COMMEMORATIVE
DESIGN

WHAT
YOU
NEED...





KINDS OF ROCK

IGNEOUS

PUMICE

OBSIDIAN

BASALT

SEDIMENTARY

CONGLOMERATE

GRANITE

SHALE

METAMORPHIC

MARBLE

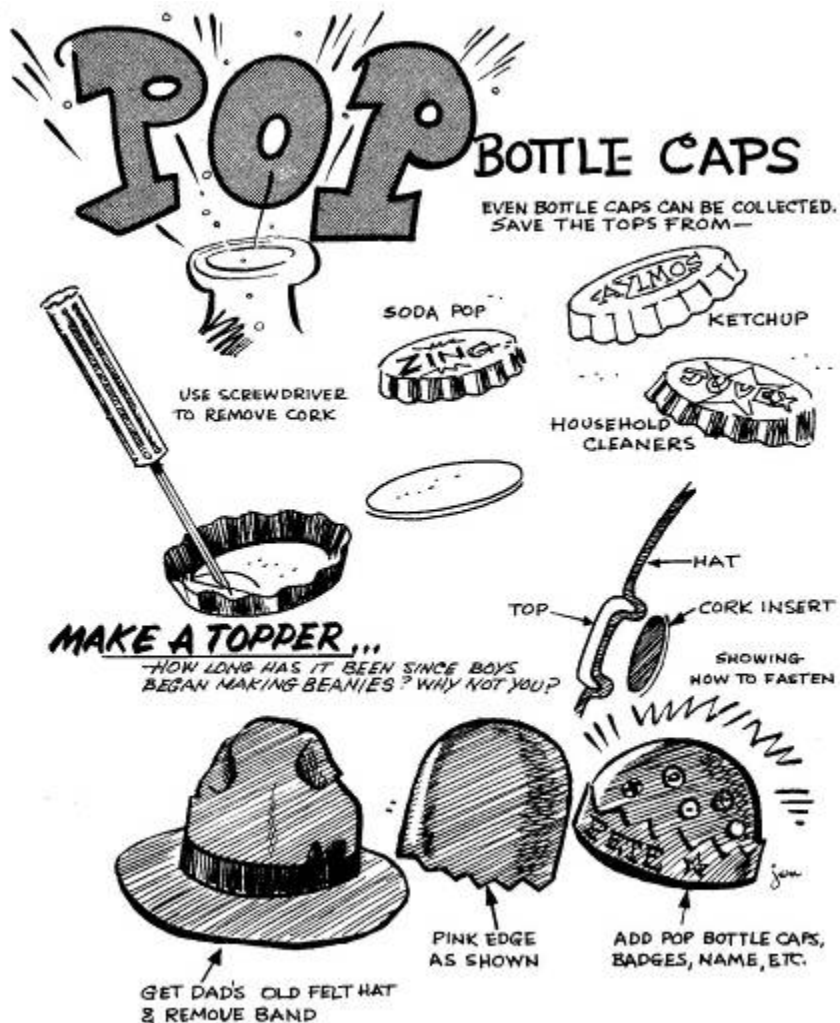
LIMESTONE

SHALE

ANTHRACITE COAL

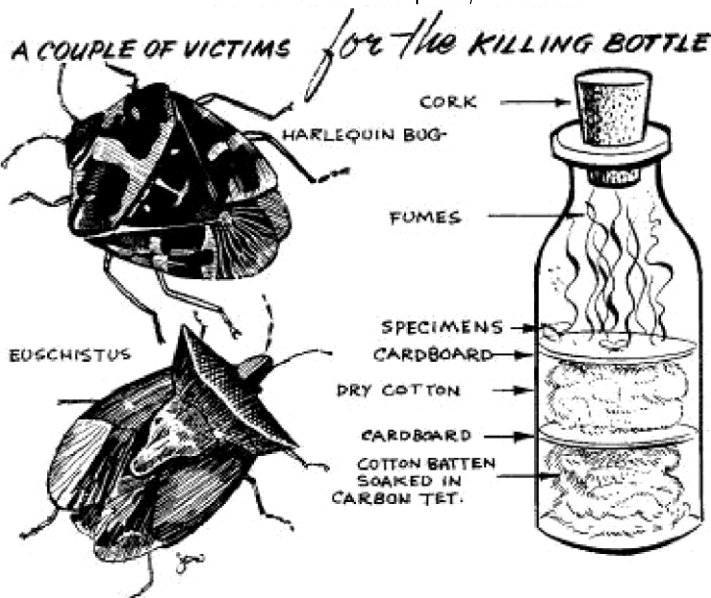
POI I'ÑHINÛ & DIÇPLAYING





BUGS *and* INSECTS

TODAY THERE ARE OVER 600,000
SPECIES OF INSECTS. OF THESE
ARE BEETLES, WASPS, AND
FLIES AND OTHERS.



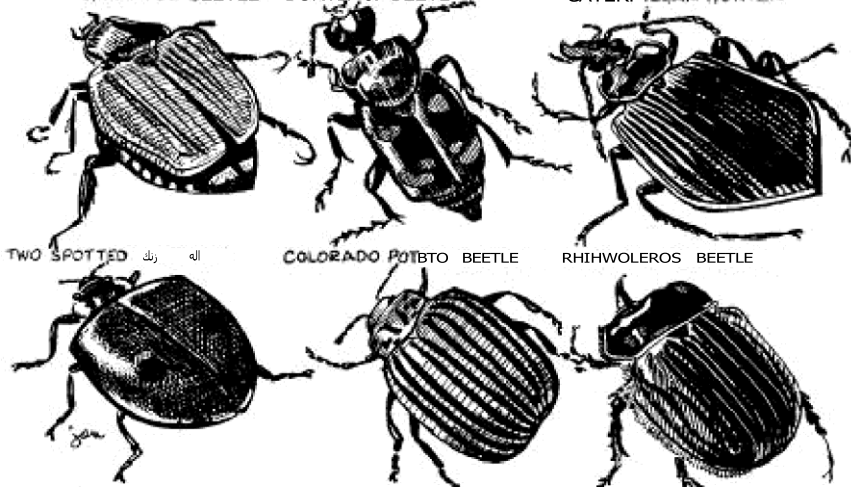
Collecting

Some BEETLES -

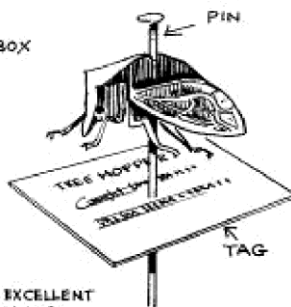
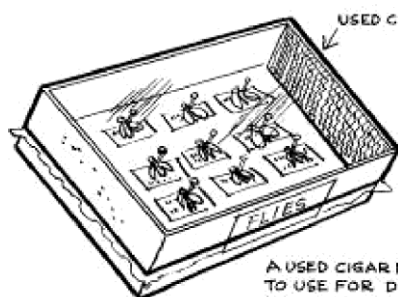
JAPANESE BEETLE

BURYIA BEETLE

CATERFLAR HUNTER



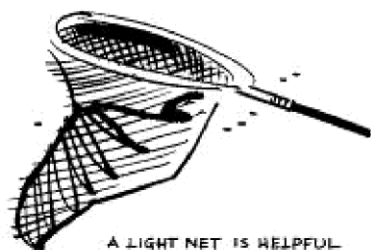
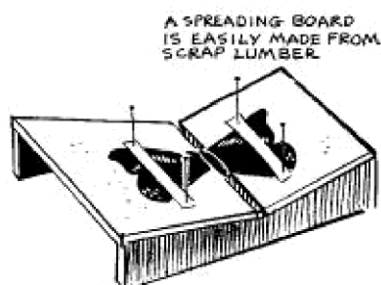
MOUNTING



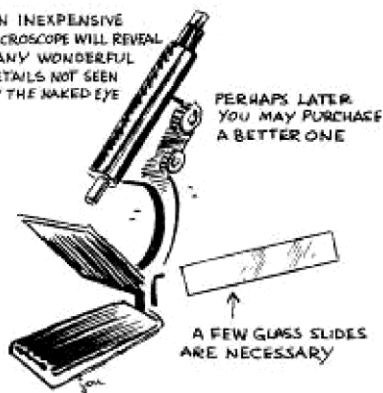
A USED CIGAR BOX IS EXCELLENT TO USE FOR DISPLAYING YOUR INSECT COLLECTION. DON'T CROWD THEM IN THE BOX. USE PLASTIC COVERING HELD ON WITH RUBBER BAND

Butterflies AND MOTHS

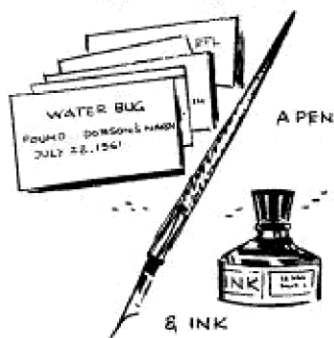
WHAT YOU NEED



AN INEXPENSIVE
MICROSCOPE WILL REVEAL
MANY WONDERFUL
DETAILS NOT SEEN
BY THE NAKED EYE



CUT CARDS FROM CARDBOARD



SOME TYPES... *Butterflies*



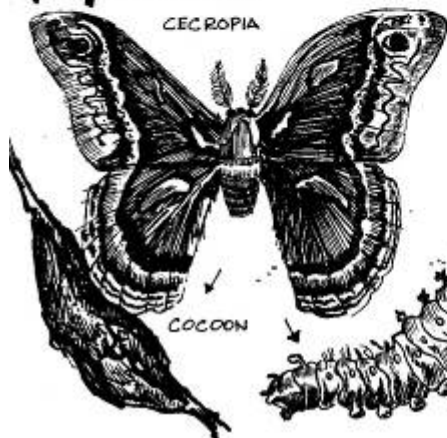
BRONZE & COPPER



THE FAMOUS MONARCH

GULF FRITILLARY

Moths



CECROPIA

COCOON



LARVA



LUNA MOTH

SPHINX MOTH



PRINTING & TRACING

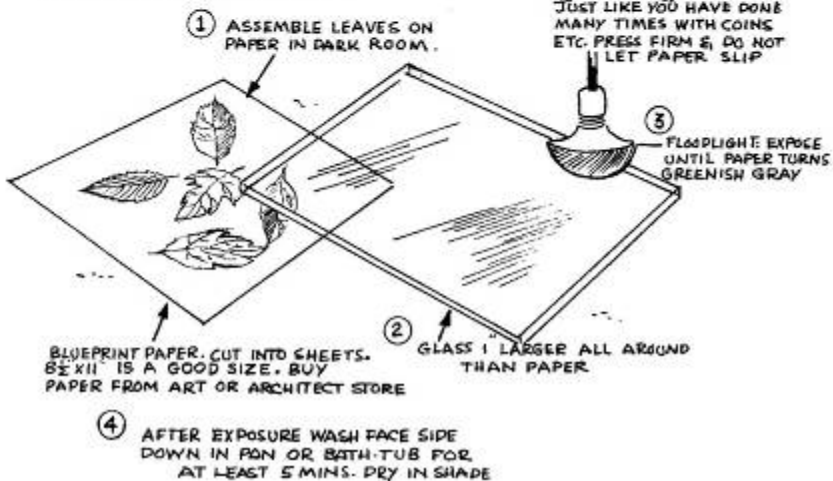
LEAVES BECOME VERY BRITTLE IN TIME & BREAK EASILY. A PERMANENT WAY TO KEEP A RECORD IS BY PRINTING. THIS MAY BE DONE BY USING CARBON PAPER, BLUEPRINT PAPER, CRAYON RUBBING, PLASTER CASTS, ETC.

CRAYON IMAGE

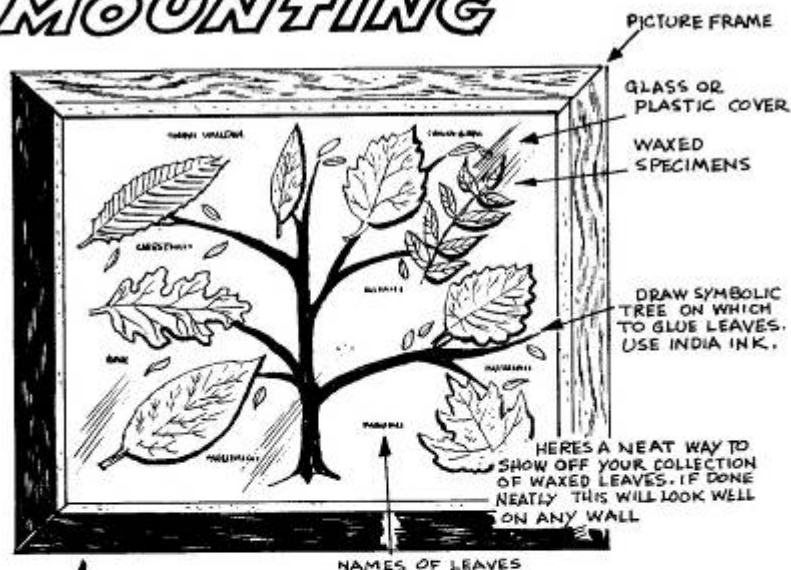
RUB ONE WAY ONLY



JUST LIKE YOU HAVE DONE MANY TIMES WITH COINS ETC. PRESS FIRM & DO NOT LET PAPER SLIP



MOUNTING



how to wax



DRYING - MOUNTING - DISPLAYING - KEEPING

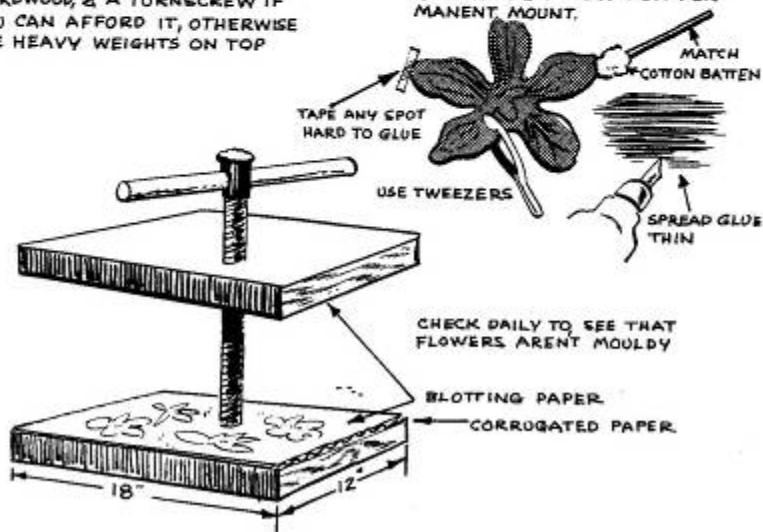
FLOWERS

DRYING

CAN YOU GET A CHEAP PRESS? OR USE HEAVY WEIGHTS

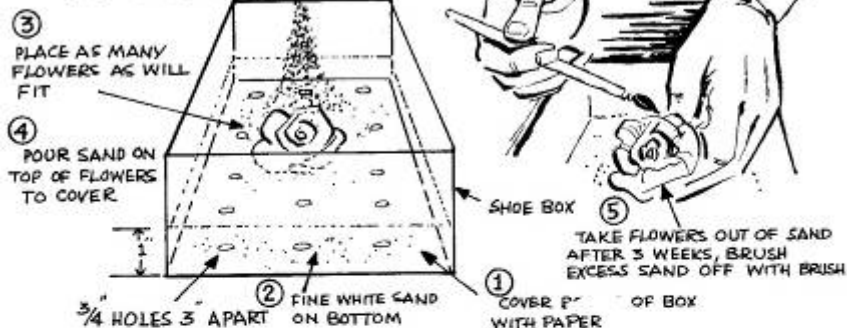
MAKE YOUR OWN. ITS REALLY
QUITE SIMPLE. ALL YOU NEED IS
2 PIECES OF WOOD, PREFERABLY
HARDWOOD, & A TURNSCREW IF
YOU CAN AFFORD IT, OTHERWISE
USE HEAVY WEIGHTS ON TOP

SET DRY FLOWER ON GLUE, LIFT
& THEN PRESS DOWN ON PER-
MANENT MOUNT.



PRESERVING

HERE'S A TRIED & TRUE METHOD OF DRYING FLOWERS. MAKE SURE YOUR SAND IS DRY. AFTER 3 WEEKS PUNCH HOLES IN BOTTOM TO DRAIN OFF SAND



3 MAIN SHAPES



DAISY

SHASTA, ZINNIA,
DAHLIA, MUM, ETC.



BELL

CAMPANULA, BLUE BELLS,
BALLOON FLOWER ETC.



LILY

HOSTA, PLANTAIN, DAYLILY,
MADONNA, ETC.



*START WITH COINS OF LOW VALUE,
HAVE YOU ANY FRIENDS ELSEWHERE
IN THE WORLD? TRADE WITH THEM
OR PERHAPS YOU KNOW SOMEONE
NEWLY ARRIVED FROM ANOTHER COUNTRY.*

HOW TO START



ENGLISH



AMERICAN



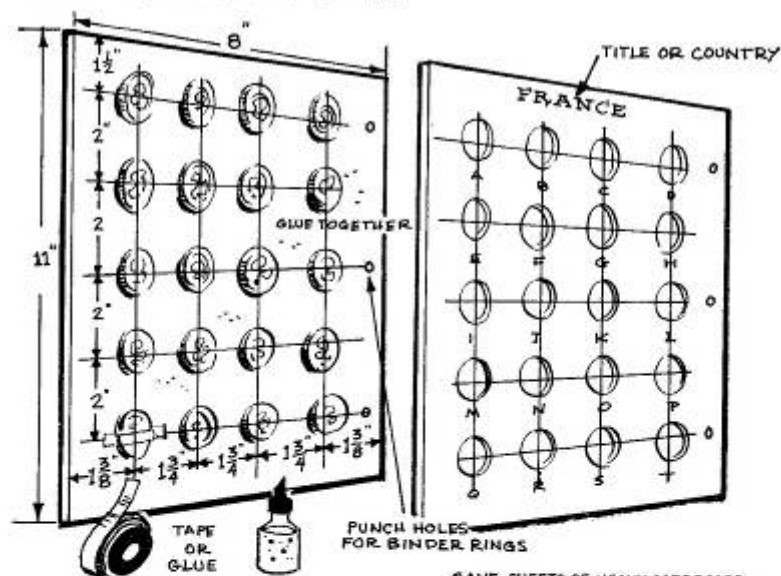
FRENCH



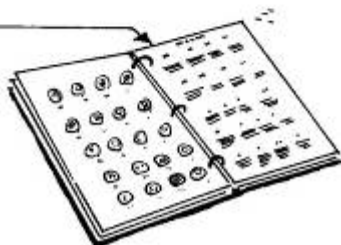
GERMAN



MAKING A COIN BOOK

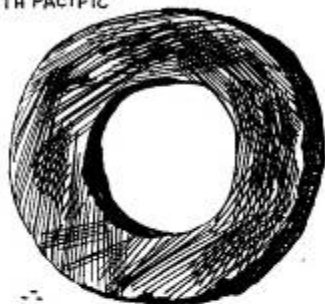


SAVE SHEETS OF HEAVY CARDBOARD (AS THOSE IN LAUNDERED SHIRTS.) MAKE HOLES IN ONE WITH SHARP KNIFE & TAPE OR GLUE COINS TO ANOTHER. GLUE BOTH SHEETS TOGETHER. BUY BINDER RINGS & MAKE UP BOOK ACCORDING TO COUNTRIES. COINS ON LEFT SIDE & INFORMATION ON RIGHT



HISTORY *of money*

ANCIENT STONE MONEY OF
SOUTH PACIFIC



COWRIE SHELL



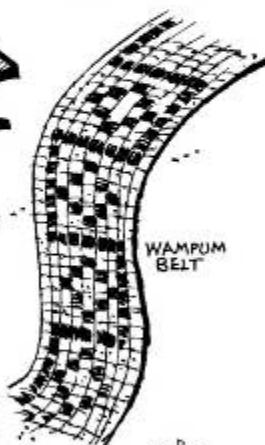
EARLY GREEK
DRACHMA



EARLY CHINESE
MONEY



AZTEC MONEY



WAMPUM
BELT



AMERICAN INDIAN BEADS

AMERICAN INDIAN SHELL MONEY



WILD OAT



BROWN BENT

ORCHARD GRASS



A MORNING WALK WILL GIVE YOU
A WIDE COLLECTION OF GRASSES.
TAKE TIME TO NOTICE THE DELICATE
GROWTH PATTERN OF EACH VARIETY.

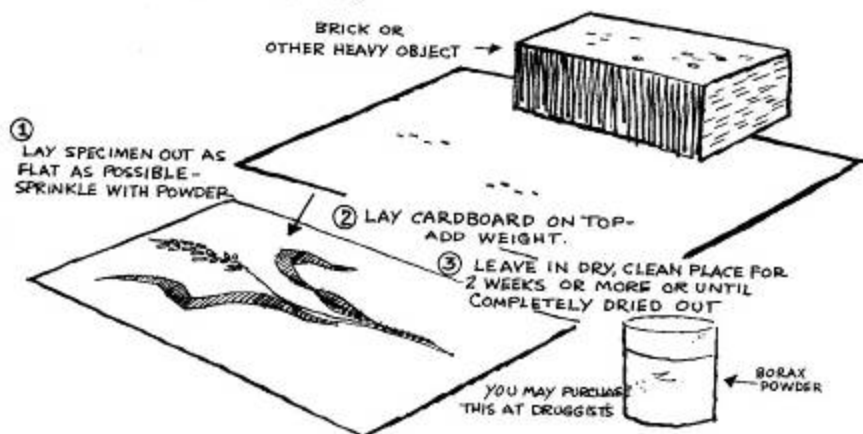


TIMOTHY GRASS



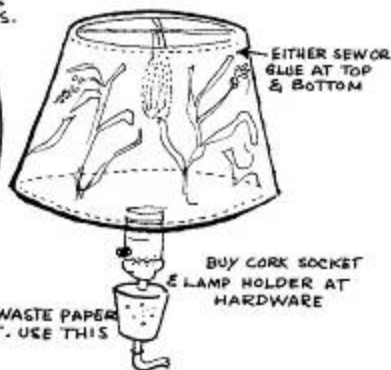
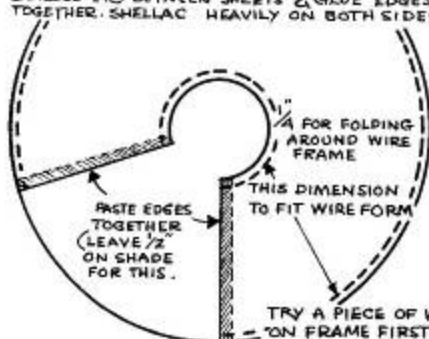
COUCH GRASS

DRYING



USE YOUR COLLECTION FOR A Lamp Shade

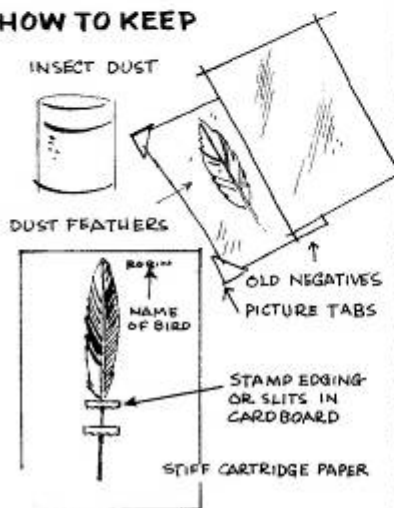
USE ONLY THIN PARCHMENT OR BROWN WRAPPING PAPER. MAKE 2 FROM PATTERN. LAY PRESSED GRASSES ETC. BETWEEN SHEETS & GLUE EDGES TOGETHER. SHELLAC HEAVILY ON BOTH SIDES.



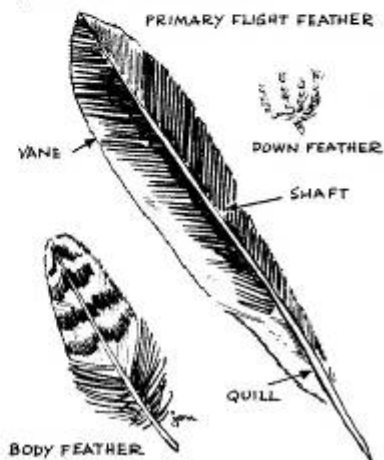


NEVER KILL A BIRD FOR ITS FEATHERS
YOU CAN FIND FEATHERS IN THE FIELDS,
COUNTRY & BY THE ROADSIDE, EVEN IN
YOUR OWN BACKYARD.

HOW TO KEEP



TYPES OF FEATHERS

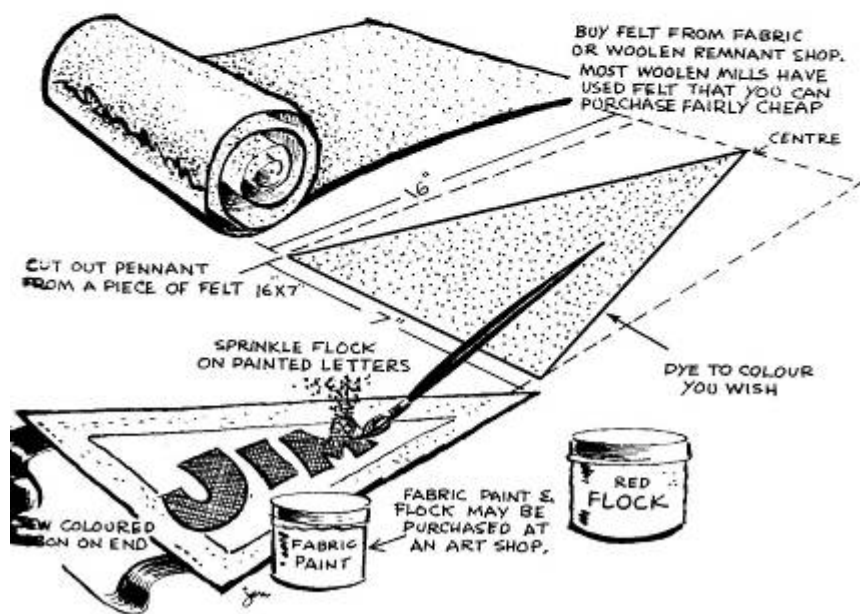




HOW TO COLLECT & MAKE YOUR OWN

MANY BOYS SOONER OR LATER COLLECT PENNANTS & HANG THEM IN THEIR BEDROOM OR PLAYROOM.

WHY NOT MAKE YOUR OWN? IT'S EASY & ALSO LOTS OF FUN. IF YOU GET REALLY GOOD, PERHAPS YOU CAN EVEN SELL SOME.



DESIGN *your own*



PERHAPS YOU WOULD
LIKE A PENNANT
FOR
your club

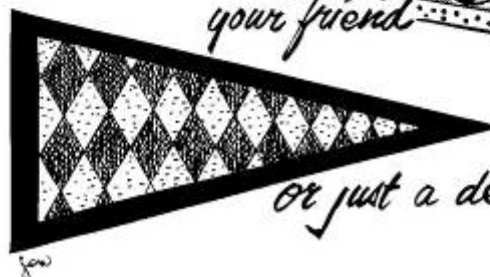


your organization



your city

your friend



or just a design

WOODS

HOW TO CUT

IF YOU HAVE DIFFICULTY
SAWING THIN SLICES
THEN CUT AS SHOWN
WITH SHARP KNIFE

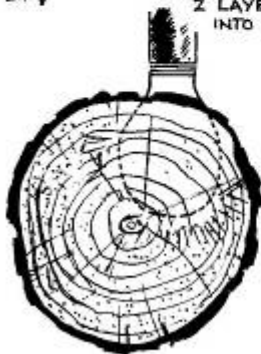


A COLLECTION OF WOODS CAN TELL US
MANY THINGS. WITH A LITTLE PRACTICE
YOU WILL BE ABLE TO SAW A THIN
PIECE FROM THE BRANCH. IT SHOULD BE
THIN ENOUGH FOR LIGHT TO PASS THROUGH.
PICK UP SAMPLES OF WOOD FROM SAW-
MILLS, LUMBER YARDS, ETC. LEAVE THE
BARK ON THE SPECIMEN

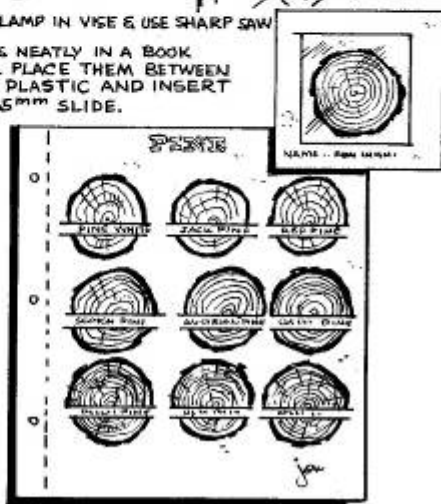


CLAMP IN VISE & USE SHARP SAW

KEEP SPECIMENS NEATLY IN A BOOK
AS SHOWN OR PLACE THEM BETWEEN
2 LAYERS OF PLASTIC AND INSERT
INTO OLD 35mm SLIDE.



HOLD SLIDES UP TO LIGHT
& NOTICE DIFFERENT
MARKINGS ON EACH VARIETY



Collecting

ATCH

椰裏再ご縄燭s 写 with!
mm m st w
ノ暇 大篇之互 may 錐西乱

『岬』
H m
(L寓罪慣肝 fl an 口口旺…gs
| N嘶 軒…5| 占亭| B柑傍軒
肘|鼻蠅『腔咭古囊着|重柑.
mama TAB-5- 从轟嘔|
囑(H畔 why of …量P繩施
FING- 一H携 鷗 ganmy
may BE T 鰐麗H 台=I
T踵 TM Ⅲ E蠅 (M…E.

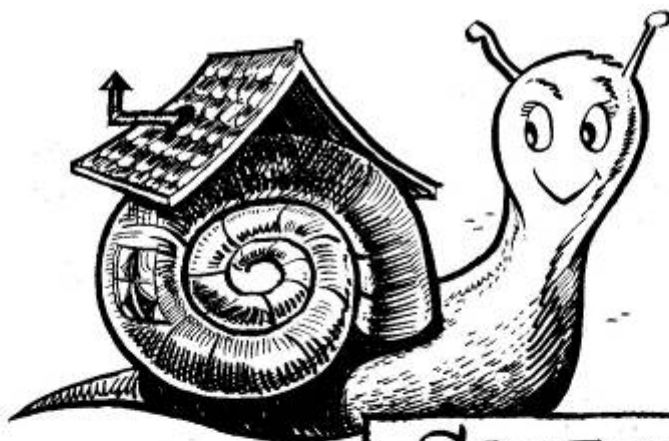
{WEMK 轟岬A辞 (= sun-awn
軌 SAVE To? EfMD

甘凸壬蟲L呂

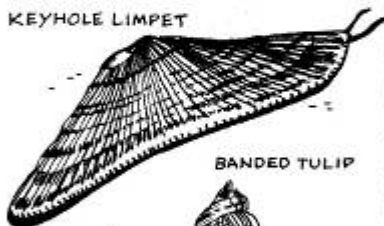
巾鵬
C端=E 鰭打。H 神
LDDSE'L¥AF 麟麟

L柏T TH… DATE \$0an

w… 一N舟蠅 〰凸〰 ABOUT
eMM, CAHns-, t1c.



KEYHOLE LIMPET



BANDED TULIP



HUMPHREY'S
WENTLETRAP



SPINDLE SHELL

SHELLS

ONE OF THE MOST FASCINATING HOBBIES IS THE COLLECTION OF SHELLS. MOST SHELL ANIMALS LIVE IN THE WATER & THEY BUILD THEIR SHELLS OUT OF THE LIME IN THE WATER. THERE ARE MORE THAN 75,000 ANIMALS WITH SHELLS



ANGEL WING

the
QUEEN
CONCH

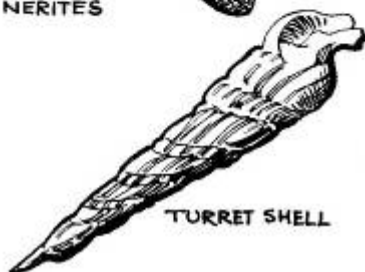


QUEEN TEGULAS

LOOK
for these!



VIRGIN
NERITES



TURRET SHELL

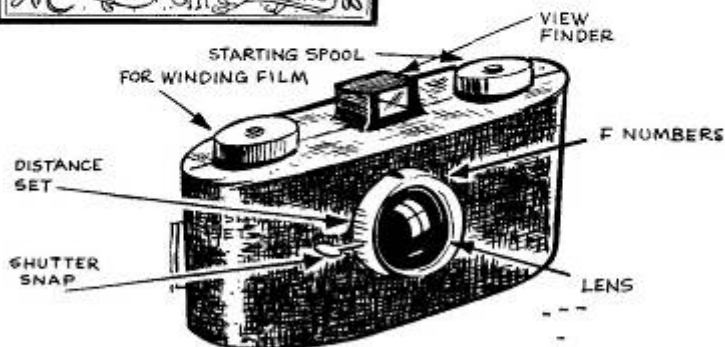


GIANT ATLANTIC



Photography

EVERY BOY TODAY CAN HAVE A SIMPLE CAMERA FOR A FEW DOLLARS. EXPERIENCE IS THE BEST TEACHER BUT HERE ARE A FEW BASIC POINTS TO MAKE YOUR PICTURE COLLECTING FUN.



BUY A SIMPLE CAMERA

THE ABOVE CAMERA MAY NOT BE EXACTLY LIKE YOURS BUT BASICALLY ALL SIMPLE CAMERAS ARE THE SAME. IF YOUR CAMERA HAS F. NUMBERS THE LOWER THE NUMBER THE MORE LIGHT IS ALLOWED ON TO FILM

Collecting

COLOUR

35

MM مسح عر مومع

MOST POPULAR ALTHOUGH MORE
EXPENSIVE. IF YOU CAN, BUY A
CAMERA THAT TAKES B.&W. & COLOUR



IF THIS
INFORMATION
ISNT ON
FRAME
PRINT IT ON
YOURSELF

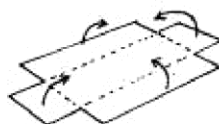
SUBJECT

Bill & Jane

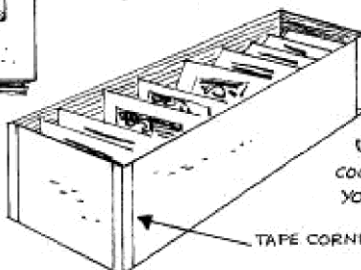
DATE

June 29, 1961

PHOTO D&A 7. 11. 11. 1960. Bright.



CARDBOARD



TAPE CORNERS

SAVE CARDBOARD
BOXES SUCH AS THOSE
USED FOR SHOES, CANDIES,
COOKIES ETC. OR MAKE
YOUR OWN

or BLACK and WHITE



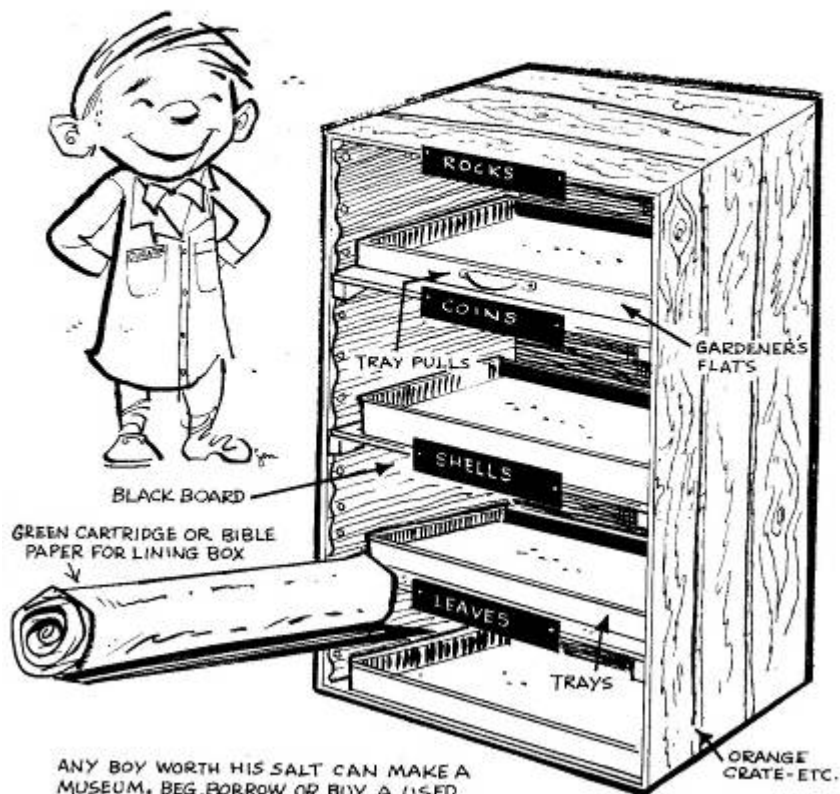
B.&W. COME EITHER
THE SIZE OF THE NEG.
OR BLOWN UP



EITHER GLUE OR USE PHOTO CORNERS



making a MUSEUM



ANY BOY WORTH HIS SALT CAN MAKE A MUSEUM. BEG, BORROW OR BUY A USED BUTTER BOX OR ORANGE CRATE. FILL IN WITH SHELVES AND "AWAY YOU GO."

Collecting

